

Belgravia II apartment

觀瀾湖·比佩亞大宅公寓

MISSION HILLS IN RESIDENCE
THE WORLD'S NO.1 GOLF CLUB

家在世界第一大球會



(86 755) 2801 6000 / 2801 3000

Disclaimer: The data provided here are taken from the model house, and are provided for illustration purpose only. The developer reserves the right to modify the property's architectural design, specifications, characteristic design, layout plan, materials and purpose of all the common facilities within the scope. For as-built details, please refer to the officially approved plans/drawings and legal documents.
備用: 本手冊所提供之數據，均以示範單位為標準，僅作示意或參考之用。具體各單位的建築設計、規格訂明、特色設計、平面圖、用料及範圍之所有公用設施用途均以政府最後批准圖則及法律文件為準，發展商保留相應修改之權利。

比佩亞大宅公寓
BELGRAVIA
apartment



One Residence, four golf courses

A scarcity in World's No.1 Golf Club

Mission Hills Belgravia Apartment

Treasure World Class scenery

Surpass superb lifestyle

Classic golf living, only in Mission Hills

一處府邸，四大球場環繞，
即使在世界第一大球會觀瀾湖，也屬不可多得的稀貴。
觀瀾湖·比佩亞大宅公寓，
收藏世界級的高爾夫風景，
精心雕琢星級品質生活空間。
最純正的高爾夫生活，只在觀瀾湖。

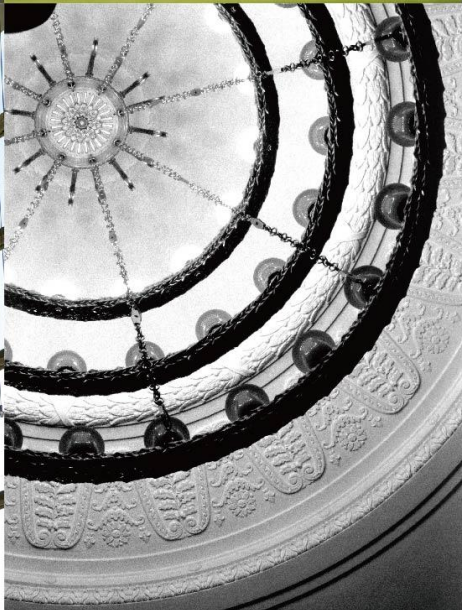
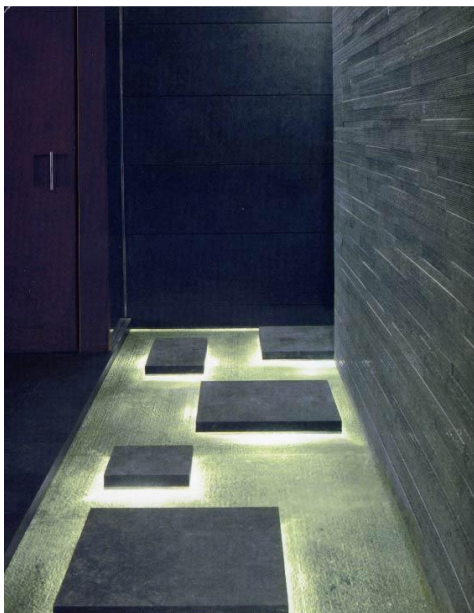
BELGRAVIA APARTMENT, THE WORLD COLLECTION
80-160M² CENTRAL PURE GOLF LIVING
大宅公寓，世界典藏
80 - 160m²純正高爾夫生活舉步即至

比佩亞大宅公寓
BELGRAVIA
apartment



- Ozaki Course 尾崎將司球場
- The 18-Hole Putting Course 十八洞推桿果嶺球場
- Zhang Lianwei Course 張連偉球場
- World Cup Course 世界盃球場





A CHOICE OF FOUR COURSES, A GEM IN THE WORLD'S GOLF CLUB 四大球場簇擁，世界第一大球會 中央珍品

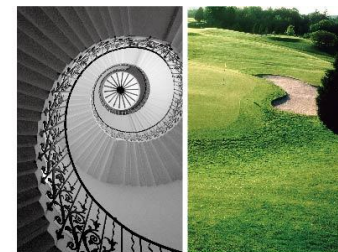
Mission Hills Belgravia Apartment is uniquely located in the world's golf club amidst incomparable surroundings, 3 tournament golf courses and a 18 hole putting green. The best golfing scenery blends into daily life.

觀瀾湖·比佩亞大宅公寓，佔據世界第一大球會不可複製的頂級資源，坐擁三大世界錦標級高爾夫球場及一個18洞果嶺推桿球場，舉目盡收無邊綠意。最頂級的高爾夫風景，也只屬生活中的平常。

INTERNATIONAL PRIVATE RESIDENTIAL OVER MILLIONS OF LUXURY INVESTMENTS 國際私屬住區，奢享百億配套

Offering the same scenery and services, that comes with the properties. What you are investing is not just a living space, but an exceptional luxurious lifestyle in the World's premium golf club.

觀瀾湖·比佩亞大宅公寓，享受與比佩亞大宅一脈相承的景觀、服務及配套。你選擇的不只是公寓，而是世界第一大球會百億頂級配套生活。



A PASSAGE TO THE GREENS RIGHT AT YOUR DOORSTEP, A TRUE GOLFING LIFESTYLE 純正高爾夫生活舉步即至

Residents have a convenient passage to ensure an easy access to the golf course. Seamlessly blending your enjoyment into a true golfing lifestyle.

觀瀾湖為比佩亞大宅公寓業主專設便捷通道，運動、生活無縫連接，自如切換，讓你享受最純正的高爾夫生活方式。

SUPRASS LUXURY FIT FOR A PRESTIGE LIFESTYLE 星級豪裝，以頂級匹配頂級

Only the best deserves the best. Luxury for the elite, Mission Hills has once again redefined the standards for living by crafting ultimate luxury lifestyle in Southern China.

頂級，方可與頂級匹配。因深諳峰層人士奢華生活之道，觀瀾湖再度突破公寓精裝標準，精心選擇超六星級奢貴材質，雕琢南中國頂級高爾夫生活。

Studio Flat 標準公寓 Area 建築面積 80M²

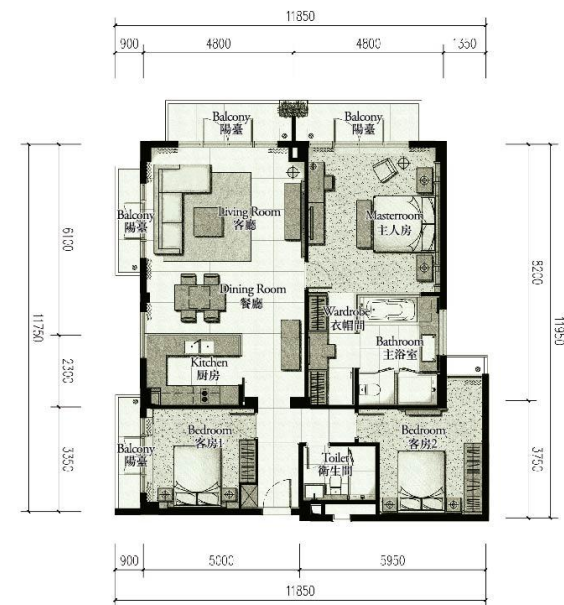
Living Room 客廳 19.85m² / 213.63 sq.ft
 Bedroom 臥室 19.36m² / 208.41 sq.ft
 Bathroom 浴室 10.24m² / 110.18 sq.ft
 Kitchen 廚房 4.77m² / 51.35 sq.ft
 Wardrobe 衣帽間 3.33m² / 35.85 sq.ft
 Front Hall 玄關 4.77m² / 51.35 sq.ft
 Balcony 陽臺 2.67m² / 28.69 sq.ft



Premiere Suite 豪華套房 Area 建築面積 160M²

Living Room 客廳 29.54m² / 317.93 sq.ft
 Dining Room 餐廳 7.27m² / 78.29 sq.ft
 Masterroom 主人房 21.05m² / 226.63 sq.ft
 Bathroom 主浴室 10.03m² / 107.91 sq.ft
 Wardrobe 衣帽間 5.74m² / 61.81 sq.ft
 Balcony 陽臺 8.19m² / 88.16 sq.ft

Kitchen 廚房 7.12m² / 76.63 sq.ft
 Bedroom 客房1 11.66m² / 125.51 sq.ft
 Bedroom 客房2 14.34m² / 154.38 sq.ft
 Front Hall 玄關 7.38m² / 79.45 sq.ft
 Toilet 衛生間 4.53m² / 48.79 sq.ft



Disclaimer: The plan is for reference only. And details and specifications will be based on the final approval by the government and respective legal documentation.
 注：本圖僅作示意和參考之用，所有細節及資料均以政府最後審批圖則及法律文件為準

Block 1, Standard Floor Plan 一號樓標準層平面圖

- Studio Flat 标准公寓: Area 建築面積 78.53~79.73m² / 845.29~858.21 sq.ft
 Premiere Suite 豪华套房: Area 建築面積 155.03~157.05m² / 1668.73~1690.47 sq.ft

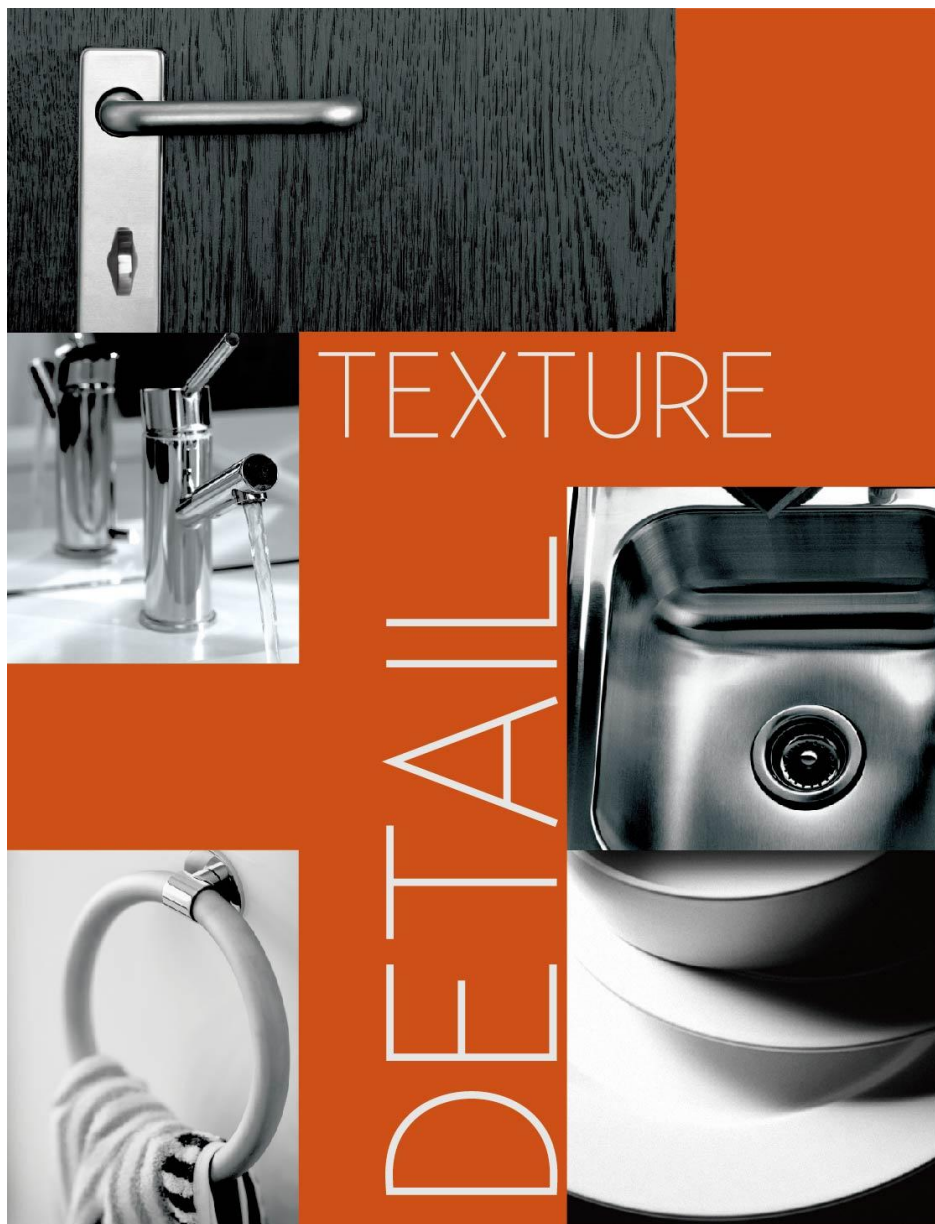


Block 2, Standard Floor Plan 二號樓標準層平面圖

- Studio Flat 标准公寓: Area 建築面積 77.87~79.26m² / 838.19~853.15 sq.ft
 Premier Suite 豪华套房: Area 建築面積 155.35~156.16m² / 1672.50~1680.89 sq.ft



Disclaimer: The floor plan is for reference only. And details and specifications will be based on the final approval by the government and respective legal documentation.
 注: 本圖僅作示意和參考之用, 所有細節及資料均以政府最後審批圖則及法律文件為準



觀瀾湖·比佩亞大宅公寓

精裝修交樓標準

(1) 客、餐廳

入戶門：訂制木質防火防盜門；
地面：大理石，配套踢腳線；
牆面：小芯板造型，木飾面；調色環保乳膠漆；
清鏡飾面（豪華套房另增局部大理石飾面）；
天花：白色環保乳膠漆飾面；
燈具：配筒燈、射燈和暗藏燈管。

(2) 客房一、客房二（僅豪華套房）

地面：地毯、配套實木踢腳線；
牆面：小芯板造型，調色環保乳膠漆；
天花：白色環保乳膠漆飾面；
燈具：配筒燈。

(3) 主臥室

地面：地毯、配套實木踢腳線；
牆面：小芯板造型，木飾面；調色環保乳膠漆；
清鏡飾面；
天花：白色環保乳膠漆飾面；
燈具：配射燈、暗藏燈管、筒燈、床頭背景壁燈。

(4) 廚房

地面：大理石；
牆面：仿大理石飾面；豪華套房部分玻璃隔牆；
天花：白色環保乳膠漆飾面；
櫥櫃電器：品牌廚櫃配燃氣爐及水槽、龍頭，西門子
冰箱、抽油煙機、微波爐、滾筒洗衣機、愛適易垃圾處
理器；
燈具：筒燈。

(5) 主衛生間

地面：大理石；
天花：白色環保乳膠漆飾面；
牆面：仿大理石飾面；
潔具：TOTO加長型分體座便器、訂制TOTO豪華洗臉盆；

臺盆龍頭：TOTO龍頭；
浴缸、沐浴龍頭及花灑：TOTO豪華浴缸、TOTO熱帶
雨林頭頂花灑、TOTO控制閥面板、TOTO手持花灑；
小五金件：毛巾架、浴巾環、手紙盒；
鋼化玻璃門；
燈具：配筒燈、射燈；
鏡框：訂制清鏡；
臺面：大理石磨雙圓邊；
臺櫃：實木面板飾面，部分貼清鏡。

(6) 公共衛生間（僅豪華套房）

地面：大理石；
牆面：仿大理石飾面；
天花：白色環保乳膠漆飾面；
潔具：TOTO加長型分體座便器、TOTO洗臉盆；
臺盆龍頭：TOTO臉盆龍頭；
沐浴龍頭及花灑：TOTO熱帶雨林頭頂花灑、TOTO控
制閥面板、TOTO手持花灑；
小五金件：毛巾架、浴巾環、手紙盒；
鋼化玻璃門；
燈具：配筒燈、射燈；
鏡框：訂制清鏡；
臺面：大理石；
臺櫃：實木飾面，部分貼清鏡。

(7) 其他：

安防系統：每戶裝配可視安防型彩色對講機1套；
空調系統：配裝空調；
熱水系統：每戶裝配燃氣熱水器。

附注：其他一切未列舉者或以上如有更改，均以政府批准圖則為
准。發展商將保留一切權利，按實際情況需要以同等質素之建築
材料及設備代替上述所列項目。

MISSION HILLS BELGAVIA APARTMENT
HANDOVER CHECKLIST

1. Living & Dining Room

- Entry door: Customized wooden fire proof door
- Floor: Marble counter top, matching skirting
- Wall: Wood veneer paneling; environmentally-friendly latex paint; plain mirror veneer (Unit B has some marble veneer)
- Ceiling: Environmentally-friendly white latex paint
- Light fittings: Ceiling lights, spotlight and concealed light tubes

2. Guestroom 1,2 (Only for Suites)

- Floor: Carpet, matching hardwood skirting
- Wall: Wood veneer paneling, environmentally-friendly latex paint
- Ceiling: Environmentally-friendly white latex paint
- Light fittings: Ceiling fluorescent lights

3. Master bedroom

- Floor: Carpet, matching hardwood skirting
- Wall: Wood veneer paneling; environmentally-friendly latex paint; plain mirror veneer
- Ceiling: Environmentally-friendly white latex paint
- Light fittings: Ceiling lights, spotlight, concealed light tubes and reading lights

4. Kitchen

- Floor: Marble counter top
- Wall: Imitated marble tiles; Suites has some glass partition
- Ceiling: Environmentally-friendly white latex paint
- Kitchen equipments: Branded cabinets with shelves and faucets, Siemens refrigerator, exhaust ventilator, microwave, rotary washing machine, in sink erator waste Disposers
- Light fittings: Spotlights

5. Main bathroom

- Floor: Marble counter top
- Ceiling: Environmentally-friendly white latex paint
- Wall: Imitated marble tiles
- Fittings: TOTO elongated sitting toilet, customized TOTO luxurious wash basin
- Wash basin faucet: TOTO wash basin faucet
- Bathtub, faucet, shower head: TOTO luxurious bathtub, TOTO tropical rain shower, TOTO control panel, TOTO

handheld shower

- Bathroom accessories: Towel rack, hand towel ring, tissue box
- Glass door: Tempered glass door
- Light fittings: Spotlights, ceiling lights
- Mirror frame: Customized plain mirror
- Counter top: Polished marble with rounded edges
- Cabinets: Wood panel with inserted plain mirror panels

6. Guest Bathroom (Only for Suites)

- Floor: Marble counter top
- Wall: Imitated marble tiles
- Ceiling: Environmentally-friendly white latex paint
- Fittings: TOTO elongated sitting toilet, TOTO wash basin
- Wash basin faucet: TOTO wash basin faucet
- Faucet and shower head: TOTO tropical rain shower, TOTO control panel, TOTO handheld shower
- Bathroom accessories: Towel rack, hand towel ring, tissue box
- Glass door: Tempered glass door
- Light fittings: Spotlights, ceiling lights
- Mirror frame: Customized plain mirror
- Counter top: Marble counter top
- Cabinets: Wood panel with inserted plain mirror panels

7. Others

- Security system: Each unit equipped with color video intercom security system
- Air conditioning system: Air conditioning
- Hot-water system: Each unit equipped with gas water heater

Disclaimer: All additions, deletion or changes will be subject to approval from the relevant government authorities. The property developer reserves all rights to substitute building materials or equipment and fittings of similar quality in accordance to supply and other conditions.

BELGRAVIA APARTMENT II